

December 29, 2005



# Proofing Client v6.0 Release Note

For Products using Proofing Client

[RealTimeProof.com](http://RealTimeProof.com)

*RealTimeProof Private Label*

*RealTimeProof Express*

Matchprint Virtual Proofing System



Kodak Polychrome Graphics  
*A Subsidiary of Kodak*

---

**© 2005 Kodak. All rights reserved.**

Kodak, RealTimeProof, Matchprint, Polychrome and KPG are trademarks of Kodak. All trademarks and registered trademarks used herein are the property of their respective owners.

September 2005

## Table of Contents

<b>TABLE OF CONTENTS .....</b>	<b>3</b>
<b>PROOFING CLIENT V6.0 OVERVIEW .....</b>	<b>5</b>
Japanese Language Support – PC version only .....	5
New Shortcut Keys When Viewing Images .....	6
Bug fixes .....	7

## Technical Support

Kodak Polychrome Graphics (KPG) provides a variety of ways to obtain support. Please choose from the following:

- **Knowledge Database and E-mail Support**

To access our Knowledge Database or request an E-mail answer, go to **[http://www.kpgraphics.com/rtp\\_support/](http://www.kpgraphics.com/rtp_support/)**

- **Phone Support**

Please check the on-line Knowledge Database for a solution before calling phone support.

**United States and Canada:** 1-877-574-7274

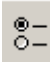
For all other global support numbers, please call the local KPG Service Department or contact your certified distributor.

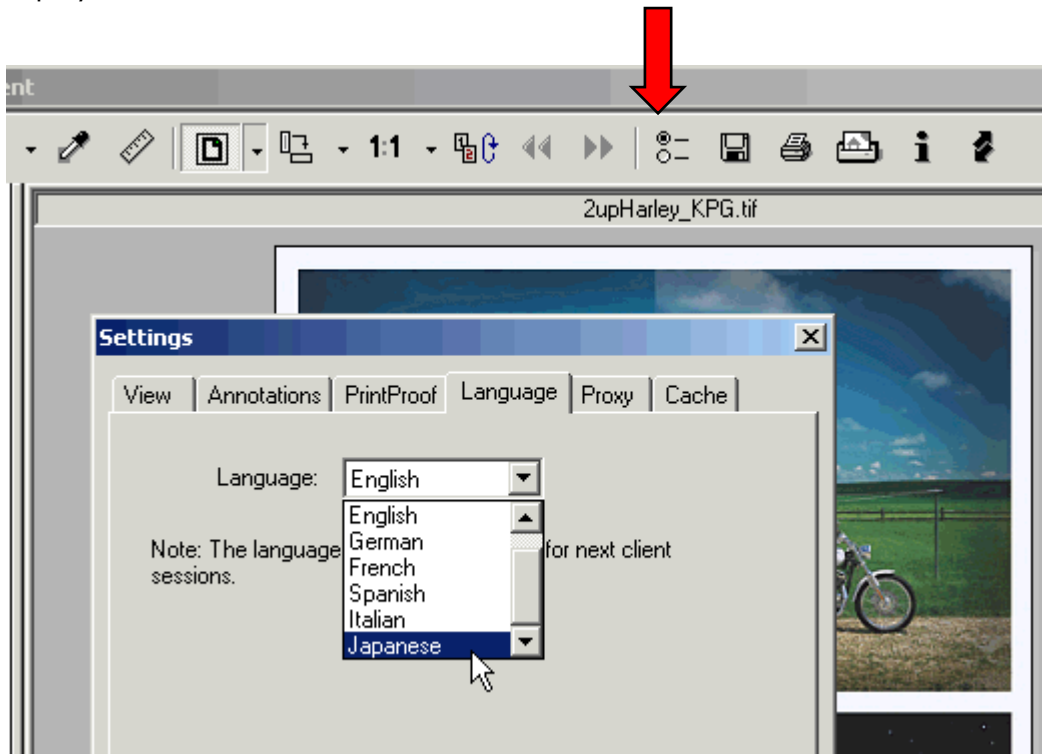
## Proofing Client v6.0 Overview

The v6.0 Proofing Client release includes the following new feature enhancements:

- Japanese language support – PC version only.
- Additional shortcut keys when viewing images.
- Bug fixes

### Japanese Language Support – PC version only

1. To change the language, click on an image to launch the Proofing Client.
2. In the Proofing Client, click on the settings icon .
3. Select the **Language** tab.
4. Select the language from the drop-down list box.
5. Exit out of the Proofing Client.
6. Click on an image to re-launch the Proofing Client. The selected language should now display in the user interface.



## New Shortcut Keys When Viewing Images

The following additional shortcut keys are available when viewing images with Proofing Client v6.0:

- **Arrow** keys work for up/down, right/left movement with a shift of 10 pixels with each key press.
- **Ctrl** key + **arrow** keys allow for a shift of 1 pixel with each key press. - PC only
- **Ctrl** key + **spacebar** + **mouse** = zoom out. - PC only
- **Shift** key + **spacebar** + **mouse** = zoom in. - PC only
- **Mouse wheel** = zooms in and out. - PC only
- **Ctrl** key plus "` + " key = zooms in from middle of screen. - PC only
- **Ctrl** key plus "` - " key = zooms out from middle of screen. - PC only
- Holding the spacebar while using any active tool will change to pan tool. - PC only
- Separation selections:
  - Ctrl** key + "` **0** " key = selects all separations
  - Ctrl** key + "` **1** " key = selects Cyan
  - Ctrl** key + "` **2** " key = selects Magenta
  - Ctrl** key + "` **3** " key = selects Yellow
  - Ctrl** key + "` **4** " key = selects Black

## Bug fixes

The v6.0 Proofing Client release includes the following bug fixes:

1. Double Carriage Return BluePrint on Mac Client print problems (dropping data) where not all annotations are printing
2. Mac OS-X Client 5.2 (12.81) - Left Pane - Annotations tab - "Echo" artifact appears to right of "Text" column
3. Can't sort annotations by annotation number
4. Default font set hard coded as "Microsoft Sans Serif"
5. Fixed bug in annotation edit box on first launch when default font wasn't used
6. Selected font is used for text drawing in annotation list view on left pane – PC only
7. Printing of foreign characters to printer produces ?????, but resolves on 2nd attempt
8. images open in multiple windows although 'Open Images in multiple window' is uncheck
9. OS-X BluePrint annotations truncated
10. Approval stamp is blinking while client receive all bootstrap's images
11. Multi view # when viewing images by clicking on "Next Images" button - the 5th thumbnail is missing in left pane
12. Sync fail if annotations were created on other image then the first at multi view
13. Japanese Localization – PC only
14. When replacing images at compare mode the client draws a black image
15. Change the look and fill of the link button
16. When Administrator moves the note's edit box and sync he become the note's owner